

McKinsey
& Company

Solve, the McKinsey Game

FAQs



Common FAQs for candidates



How can I prepare?

There is no preparation needed for Solve, the McKinsey Game. We are aware external companies offer coaching, but it is not required or necessary to do well.



Do you offer extra time for disabilities?

Yes, if you have a disability, health condition or specific learning difficulty, please speak to your recruiter and we can accommodate you accordingly.



Is Solve, the McKinsey Game available in multiple languages?

Yes, Solve, the McKinsey Game can be taken in English, Spanish (Iberia or Latin America), Portuguese (Iberia or Latin America), or Japanese. Please select the language you feel most comfortable completing in.



Who should I contact if I experience technical issues?

All technical issues should be directed from you (the candidate) to gbil-support@mckinsey.com

You can email the support team directly, or use the live chat function. The support team will be able to run diagnostics on your link and help solve any issues directly with you, including the graphics not working or tech checks failing.

Please contact your recruiter if you have non-technical questions.

Please note: if you experience technical issues during your Solve, the McKinsey Game and do not contact support, we cannot make any exceptions to allow for a reset



Will I lose time if I contact support during the Solve, the McKinsey Game?

No, the support team will work with you to solve the issue you are experiencing and offer you extra time or reset your link depending on the issue. You will need to contact the support team at the time your technical issue arises.



Do I need specific equipment?

After clicking on your link, you will be taken through a tech check before starting Solve, the McKinsey Game. This will inform you on whether your device meets the minimum specification requirements.

Sound is not necessary and a mouse is optional.



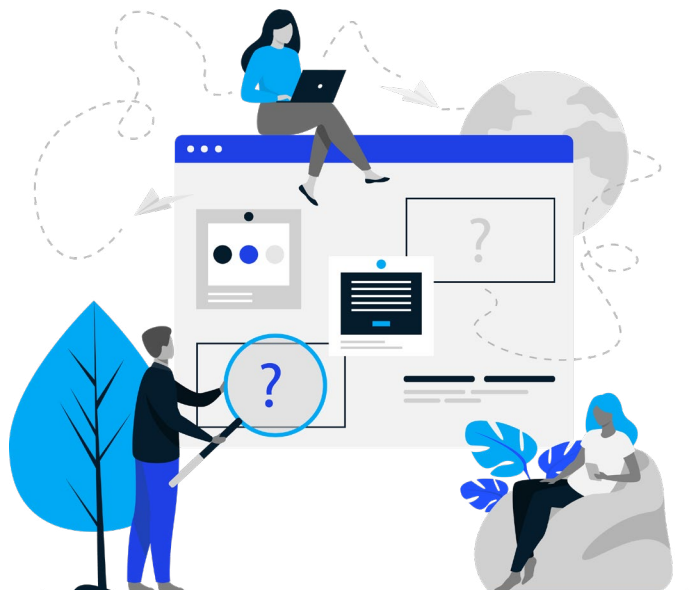
How do I change my timeslot?

If you have not yet started Solve, the McKinsey Game, you can click into your link and schedule a new time slot.



Can I complete Solve, the McKinsey Game on an iPad or phone?

The assessment is only available on PC or Mac.





How long do I have to complete Solve, the McKinsey Game?

Solve, the McKinsey Game is valid for 70 minutes. We suggest finding a time slot where you will not be disturbed and can complete the assessment without any interruptions.

Please note, each task within Solve, the McKinsey Game begins with an untimed tutorial, which directs you to the task's objective and provides guidance on how to navigate the task.



How do you counteract potential cheating?

Solve, the McKinsey Game uses advanced AI methods to ensure that there is ample variation in each scenario for each candidate.

It is designed so that no two individuals have the same parameters and combinations of data.

You may also be asked at random to take an additional task in person and/or to explain your logic used. Your recruiter will inform you if this is the case.

Solve, the McKinsey Game does not require previous business knowledge or gaming experience. You will be provided with a tutorial at the start of each task to help you become familiar with what you are required to do and how to navigate around Solve, the McKinsey Game.



Will you make a decision just on the results from Solve, the McKinsey Game?

No. The results from Solve, the McKinsey Game will be taken into consideration together with the rest of your application and any other assessment results. Therefore, the McKinsey recruiter will make a decision based on multiple factors as referenced in the Recruitment Privacy Notice.

We will be able to provide you with the score that you achieved after participating in Solve, the McKinsey Game and upon request, your percentile range which is a quartile benchmarked with other job applicants.

We cannot provide you with the maximum score, use cases or screenshots of Solve, the McKinsey Game. We also cannot provide any other information that may disclose our proprietary recruiting methodologies and intellectual property, in particular trade secrets.



McKinsey Recruitment
Copyright © McKinsey & Company
Designed by US Design Center

www.mckinsey.com

 @McKinsey

 @McKinsey